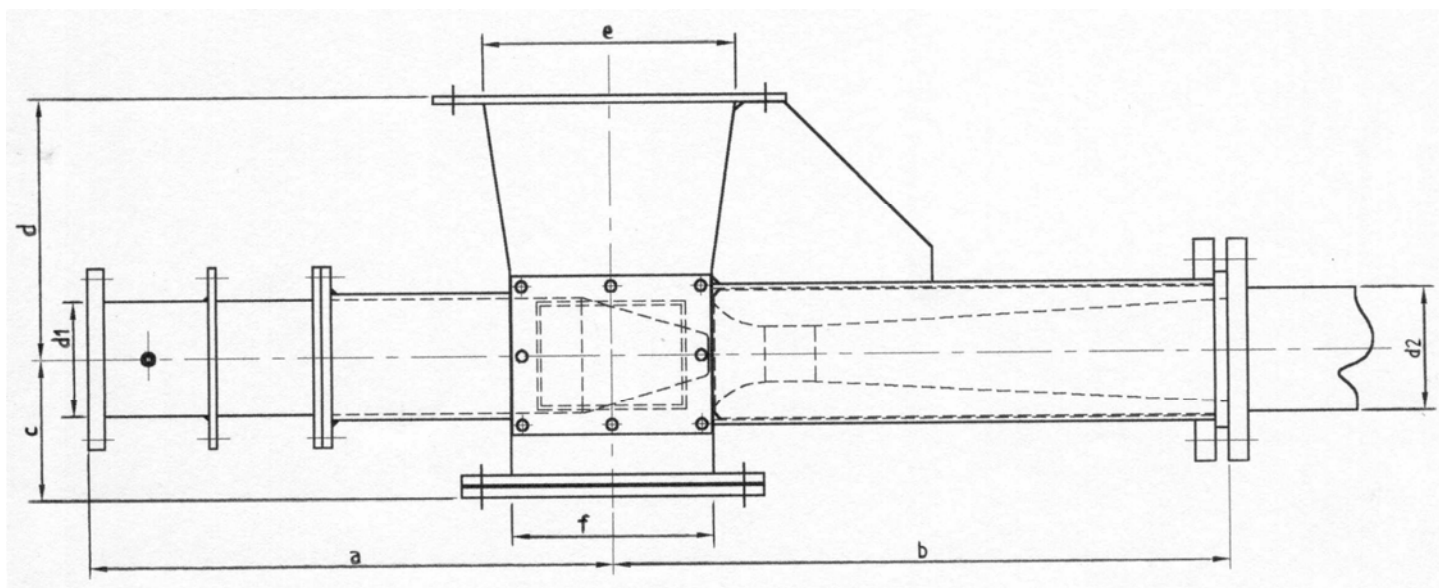


## Dimension Sheet for medium pressure Ejectors



### Ca.-Dimensions of ejectors

d2	d1	a	b	c	d	e	f
DN50	60,3	331-450	399	110	200	200	160
DN65	60,3	275	396	111	200	200	160
DN80	88,9	400-530	486-515	140	260	250	200
DN100	114,3	400-495	596-605	140	260	250	200
DN125	139,7	475	746	160	300	300	250
DN150	139,7	475-698	871-883	160	300	300	250
DN175	193,7	575	1026	200	325	350	300
DN200	193,7	600	1171	225	450*	400	350

\*high version

Measurement are shown in mm

Dimensions shown are examples of available units. The design variations depend on the diffuser required and the customers in/outlet connection requirements. Customization of these units is possible to suit your individual requirements.

## Pressure-Vessel/Ejector - Specification for an inquiry

For an optimized and fast processing of your inquiry please fill out this data sheet as complete as possible. Leave fields empty where information is not available.

Company: \_\_\_\_\_  
Inquiry-No.: \_\_\_\_\_  
Project Designation: \_\_\_\_\_

### Bulk Solids Data:

Bulk solids designation: \_\_\_\_\_  
Average particle size: \_\_\_\_\_ mm  
Maximum particle size: \_\_\_\_\_ mm  
Bulk density (fluidized): \_\_\_\_\_ kg/ m<sup>3</sup>  
Bulk density (vibrated): \_\_\_\_\_ kg/ m<sup>3</sup>  
Flowability (good flowing, cohesive, bridging): \_\_\_\_\_  
Abrasion characteristics: \_\_\_\_\_  
Humidity (humid, hygroscopic, dry): \_\_\_\_\_  
Bulk solids temperature: \_\_\_\_\_ °C

If available, please enclose a particle size distribution

### Processing data:

Throughput normal: \_\_\_\_\_ kg/h  
Throughput maximum: \_\_\_\_\_ kg/h  
Conveying plant in operation: \_\_\_\_\_ h/day  
Conveying plant in operation: \_\_\_\_\_ h/year  
Desired range of control of the throughput: \_\_\_\_\_  
Conveying distance: \_\_\_\_\_ m  
Thereof vertical part of conveying distance: \_\_\_\_\_ m  
Numbers of bends (Elbows): \_\_\_\_\_ x 90°  
Numbers of bends (Elbows): \_\_\_\_\_ x \_\_\_\_\_ °

Please enclose a drawing (CAD (ACAD 14/2000) or handmade)

### Interface Data:

Kind of conveying destination: \_\_\_\_\_  
Pressure gauge at conveying destination: \_\_\_\_\_ mbar(gauge)  
Feeder existing ? (yes/no): \_\_\_\_\_  
if yes, Kind of feeder / manufacturer: \_\_\_\_\_  
connection dimensions: \_\_\_\_\_  
Air supply existing (yes/no): \_\_\_\_\_  
if yes: kind of air supply, manufacturer: \_\_\_\_\_  
flow rate (suction condition): \_\_\_\_\_ m<sup>3</sup>/h  
pressure increase: \_\_\_\_\_ mbar(gauge)  
motor power rating: \_\_\_\_\_ kW

### Notes:

\_\_\_\_\_  
\_\_\_\_\_  
\_\_\_\_\_